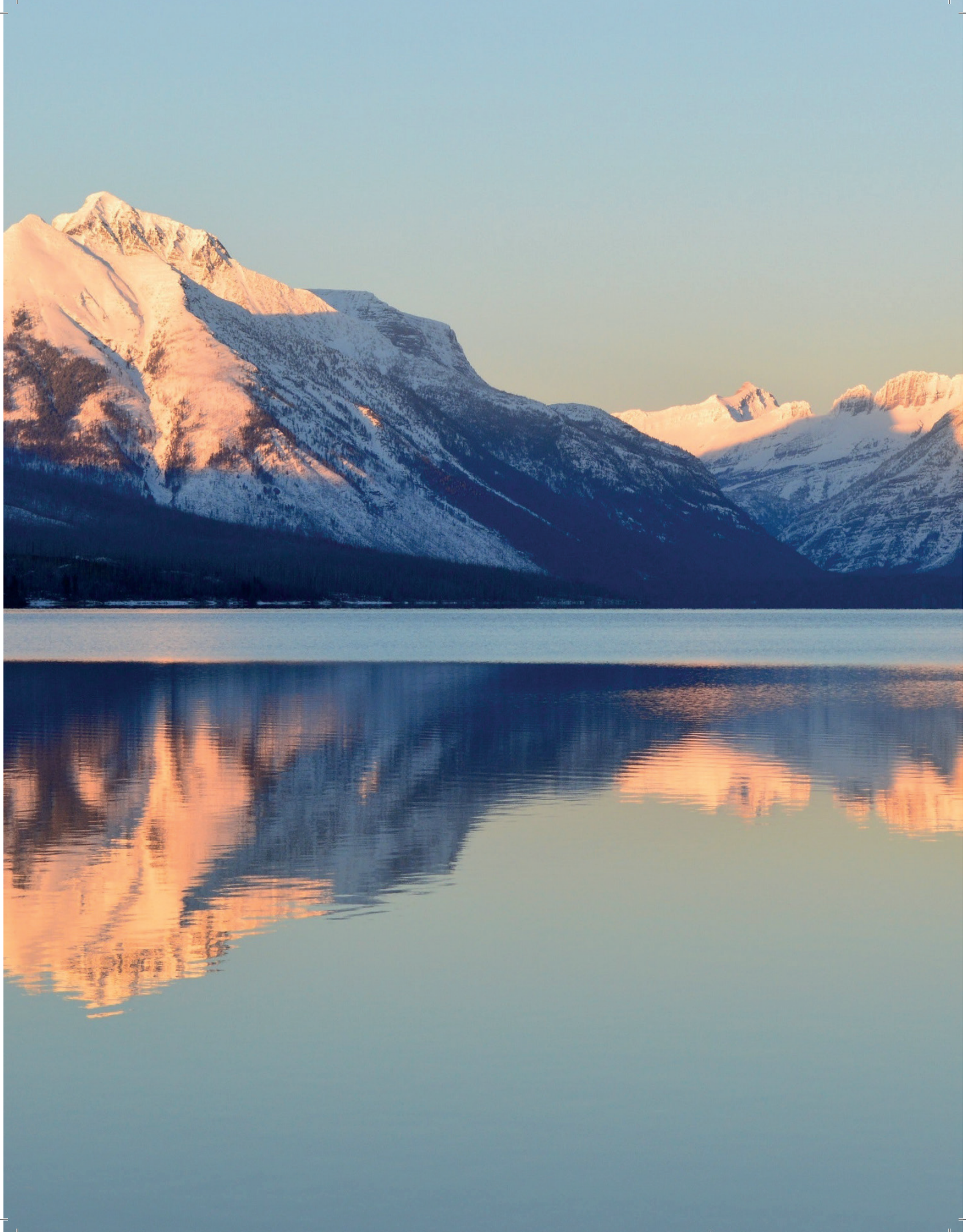


ECONOMIC PROJECTS

Supported By Unions





VISION OF WORLD WORKFORCE INTERNATIONAL

Marcus Asay

FIGHTING HUMAN TRAFFICKING/ETHNIC PHILANTHROPY

Chenchula

ELEMENTAL STAFFING

Harold

WHY WE'RE GOING GREEN

Chenchula

EXPORTS ON THE WEST COAST

Chenchula

RAPPLES

Kurt Ellington

HEALTH CARE WHICH MAKES SENSE

Henry Mendiola

SHAZURA

Marilyn Goldsmith

WHAT WOULD DISNEY LOOK LIKE IF IT STARTED TODAY?

Micheal Archine



WORLD WORKFORCE INTERNATIONAL

OUTREACH - ORGANIZE - ECONOMIC ACCELERATION

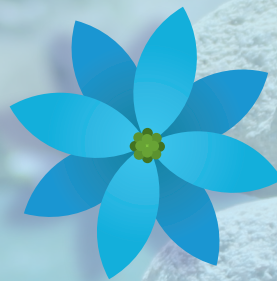
The World Workforce International (Work.in) is an international union and a federation of independent international and national unions across the United States of America.

Work.in believes in the dreams of people and acts as a promoter of economic strength and stability for working people everywhere.

Work is dignity in the eyes of the worker, and Work.in is a protector and organizer of working people for better economic lives, safety, security, health, welfare, death and other ancillary benefits.

FIGHTING HUMAN TRAFFICKING THROUGH FASHION

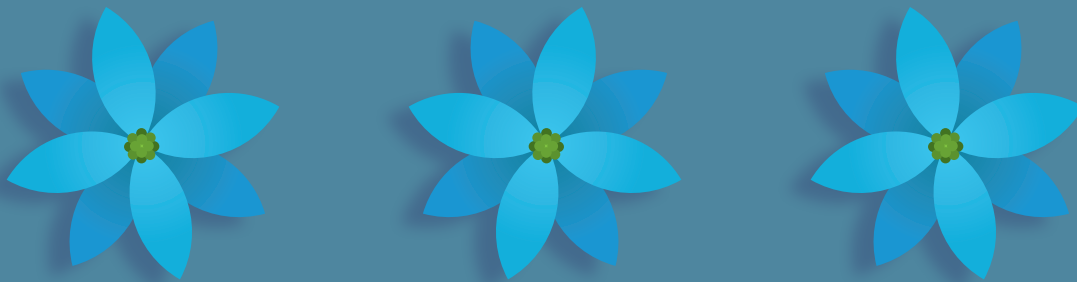
By: Chenchula



ETHNIC PHILANTHROPY

By: Chenchula

American Labor Alliance (ALA) has pledged its support to fight human trafficking through Made for Them, a non-profit which has been fighting human trafficking and spreading awareness through their fashion line and annual fashion shows. The founder, Andrea Shabaglian, started Made for Them several years ago to offer healing, hope, and new opportunities for survivors of human trafficking. Human trafficking, also known as modern-day slavery, is the exploitation of human beings through force, fraud, or coercion for commercial sex or forced labor. It's also the second fastest growing international crime and exists right here at home.



ALA is now a member of FISH Philanthropy (Fund for Indian Subcontinent Heritage), which was started by a group of South Asian philanthropists who have decided to make a difference in California's Central Valley. After hearing that the valley is one of the poorest counties in the United States, they created the first philanthropic initiative in the Central Valley. South Asians include Indians, Pakistanis, Nepalese, Bhutanese, Sri Lankans, Bangladeshis, and Maldivians.

This year, FISH has decided to fight domestic violence and are holding their first fundraiser for the Marjaree Mason Center on October 6th. They hope to encourage others to give and set an example for future generations. The fund, inspired initially by Latino Giving Circle, was formed with the help and influence of Ashley Swearingen who is the CEO of the Central Valley Community Foundation and was in the past, Fresno's mayor.

ALA understands that ethnic philanthropy groups do well because they build on shared values and creatively solve problems within their communities.





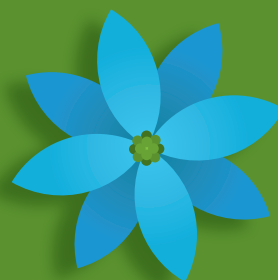
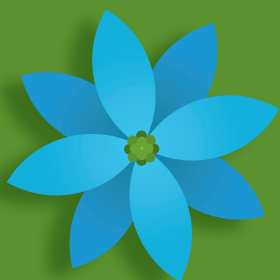
Why We're Going Green

State law requires at least 50 percent of California's electricity to come from noncarbon-producing sources by 2030. Understanding the need for solar farms, World Workforce International has launched a utility-scale solar project Delano, CA. Utility-scale solar means that a developer will finance a solar project and sell the power to a wholesale or distribution company, much the same as a coal or gas power plant would operate.



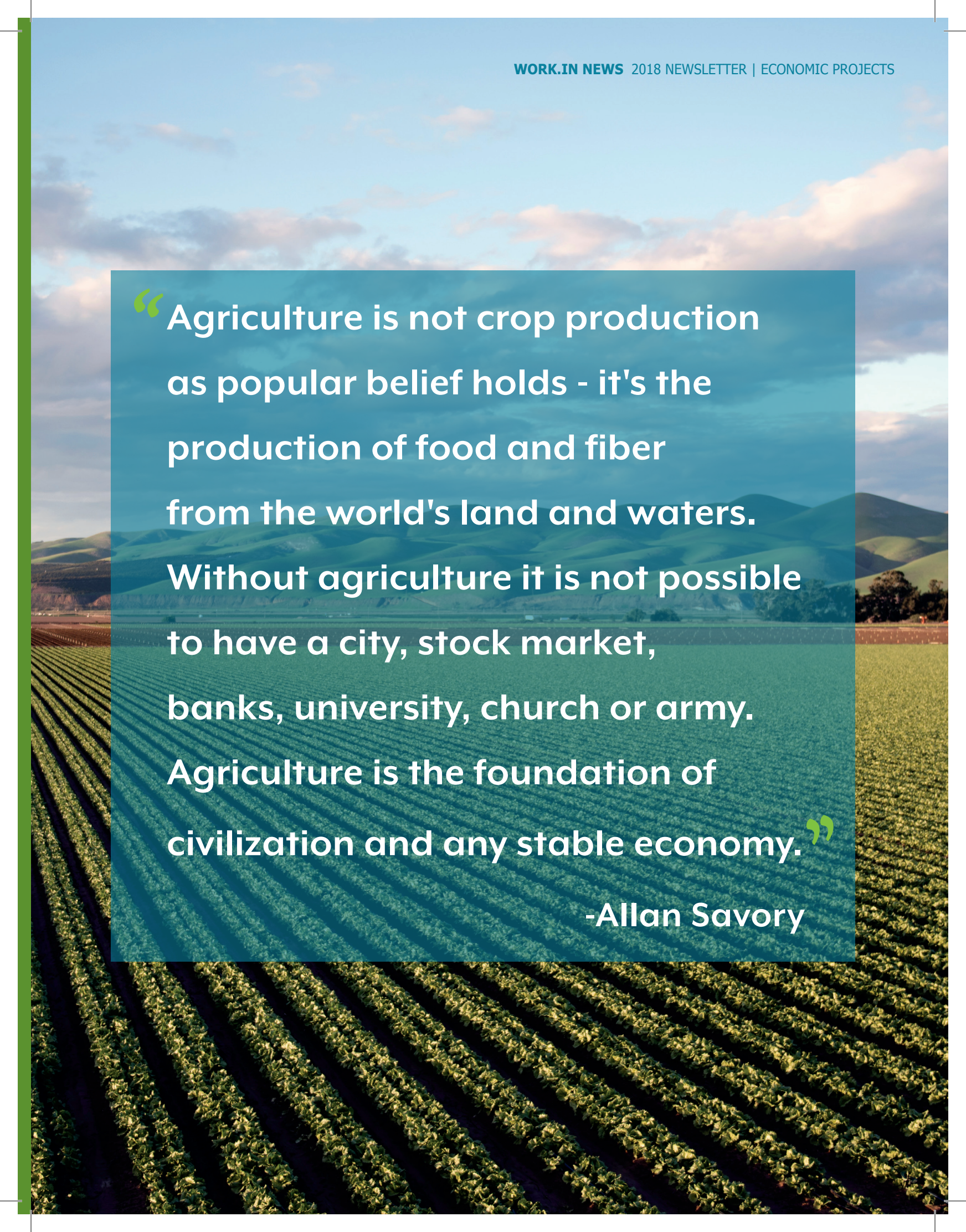
EXPORTS ON THE WEST COAST

By: Chenchula



It's no secret that California is one of the top exporters in the world, especially of agricultural goods. As prospects from global markets increase, the demand for exports continues to grow. With the support of lawmakers and the public, World Workforce International is launching the first-ever International Air Cargo Facility in the West Coast dedicated to exports. In 2017, California's exports of agricultural products, non-manufactured goods, and raw materials jumped to \$2.25 billion from \$1.70 billion.

For local manufacturers and agribusinesses, the expansion of a logistics system will emphasize better processing speeds, higher efficiency, more specialized customer service, time-definite delivery, and reduced costs. Perishables will be exported within a matter of days instead of weeks or months, thereby increasing the value of goods. By boosting exports, thousands of additional jobs will be created, expanding market reach, reducing noise and air pollution, cutting down on highway truck traffic, and creating many new opportunities to drive our state's economic growth by way of a snowball effect.



“Agriculture is not crop production as popular belief holds - it's the production of food and fiber from the world's land and waters. Without agriculture it is not possible to have a city, stock market, banks, university, church or army. Agriculture is the foundation of civilization and any stable economy.”

-Allan Savory

READY

ACCESS

PERSONNEL

PLATFORM

LABOR

EMPOWERMENT

SYSTEM

What is it?

The RAPPLES.US website functions as Enterprise Resource Platform (ERP) to support multiple website businesses, within the Work.in (World WorkForce International) group.

Licensing and Internal Use.

'Rapples' has been developed in-house, as a legal commercial grade software. The software is based on best-of-breed fully re-licensable open-source and private code libraries.

Our Currently connected service-sites include:

www.Omnisbenefitadmin.com

www.AvantoHealthCare.com

www.Compasspilotwc.com

www.Pamana.life

www.Wowfed.org

www.Omegacla.org

www.Oasislaborassociation.org

www.Americanlaboralliance.org

www.Libu.team

www.Libuuniversity.com

The Vision

The RAPPLES software platform was designed to fulfill the mission of our founder, Marcus Asay, in his role to complete the vision that labor leader Caesar Chavez bestowed upon him, with the plea to bring affordable benefits and financial access to members of the under-represented labor class. The platform is designed to integrate to an online credit-union, whose platform is completed and ongoing accreditation review by federal regulators.

The ability to achieve industrial level performance and security, based on the low operating costs of a non-profit, has been realized using ingenuity and community resources, reflecting our ethic to bring the maximum value to our members at the minimal costs.

Unlike other benefit providers, the organizations' goal is not for amassing wealth in the organization or to provide extravagant salaries and bonuses to the CEO/charter-members. In contrast, the focus is on members savings, and building mutual trust in platforms to administer benefits and services at basic costs.

How does it serve the members?

RAPPLES also provides "union membership" signup forms, designed to be compliant with federal requirements. Our current signup sites include:

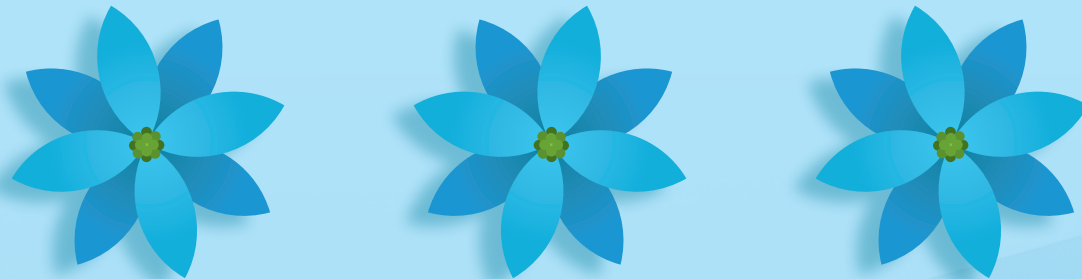
<https://www.wowfed.org/membership/>

<http://www.omegacla.org/membership-signup/>

<http://oasislaborassociation.org/membership-signup/>

<http://americanlaboralliance.org/membership-signup/>

RAPPLES further serves as a hub in aggregating membership materials, and issuing communications (via email, phone & land-mail). Grievance forms, for union-member issues, are also provided on the RAPPLES hub.



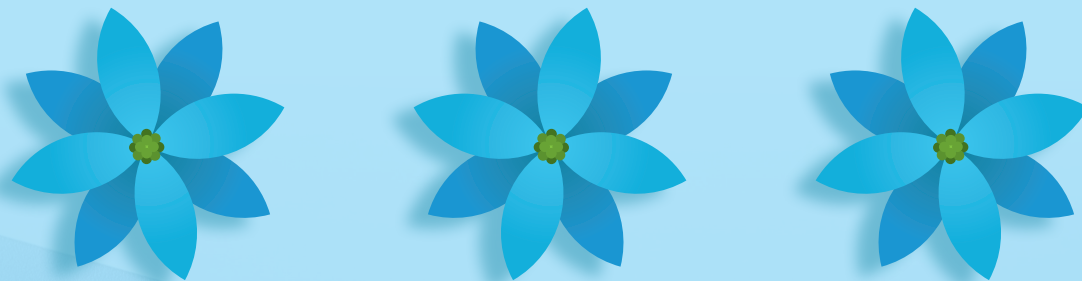
What 'Financial Processing' does it do?

The platform is capable of payment processing, and currently provides sales tracking and commissions distribution to associate members. 'Rapples' also serves as the Data-Warehouse, where the benefits of our clients are maintained for retirement-trust, health-care, funeral-expense, (and forthcoming benefit offerings). The system is designed with complete transparency in mind, based on 'HIPPA' compliant databases and standardized accounting reporting (SQL) for regulatory compliance.

Further developments and Partnerships.

A 'Public Offering' of the software for sale/service is under consideration. This is to include a complete Enterprise solution for sales, inventory and commissions record keeping including banking capabilities, available for mid-size companies seeking to harness these capabilities at a fraction of the cost of traditional enterprise platforms. The organizational vision is to improve the quality of our societies, through empowering worker and organizational entities locally and globally.

International Commerce – In support of our International Union Trade Partners we are working on international payment gateways, and commerce distribution models, to support emerging economies wishing to participate in the worldwide workforce.



What are the future plans?

We have ongoing plans to eliminate costly 3rd party bank-accounting solutions (such as QuickBooks and Intuit cloud bookkeeping providers) to provide a complete in-house solution for the entire accounting processing (including a customer account & payment portal). Eliminating costly and outdated providers, while embracing open emerging technologies is the cornerstone of our strategic technology plan.

HEALTH CARE WHICH MAKES SENSE

By: Marilyn Goldsmith

Over the past decade workers have relied on their jobs for access to health insurance, which presumably is out of reach financially for most workers. Currently, many of these employees struggle to afford major medical insurance, even when subsidized by their employers or under the Affordable Care Act (ACA). It would likely be a stretch for a low-wage worker, making under \$13 an hour, to afford even the average premium. Even when their employer pays between 50-80% of the premium for the employee and their family. While generous, this still leaves a low wage worker vulnerable to health care and with two choices:

- 1) Waive coverage;**
which still leaves the employee liable for the individual mandate.
- 2) Pay for the coverage;**
which makes them stretch their already tight budget.

However, with a limited budget, employees now have options which provide access to health care in the event of an illness or accident. These plans are called Limited Benefit and Minimum Essential Coverage (MEC) plans, once used for industries like restaurants and staffing companies, are now gaining momentum amongst small to midsize businesses.

MEC benefit plans are not major medical plans. MEC plans are ERISA based health plans that provide 100% preventive coverage as required by the ACA. These plans also satisfy the individual mandate, and the 4980H(a) penalty, which is a part of the employer mandate. These plans vary in the market place by coverage and cost. They are usually bundled along with remote Teladoc services and a Rx plan for limited Tier 1 prescription coverage.

Limited benefit plans are a fixed indemnity plan and pay set dollar amounts based on a schedule of benefits for in-network medical expenses. For instance, a plan could provide three standard physician visits a year with a co-pay of \$20 per visit, or \$200 a day toward an Emergency Room visit. These plans average around \$129 a month for single coverage. Most MEC carriers require the employer to pay half of the premium. Not only do these plans provide affordable access to healthcare for hourly employees, it benefits the employer as well, by being significantly cheaper than major medical insurance.

The only major medical alternative for the low wage hourly worker has typically been a Minimum Value Plan also known as (MVP) plan. This plan usually has an annual deductible of \$5000 per individual and average three to four times as much as the MEC bundle plan. Employers have started enrolling their workers into either the MEC or MVP classifications, placing hourly workers in the MEC plan and salaried employees in the MVP plan. Having options allows the employer to offer their hourly employees the limited benefit plans to save money.

Aside from the cost saving aspect of these plans, MEC plans can also be used as a recruiting technique for part time workers who, without a working spouse, may have no coverage at all.



TATANCA

HEALTH CARE ASSOCIATION OF AMERICA

To save money on your employee benefit plans contact Tatanca at (844) 428-2686 or visit our website www.tatanca.com.

Title

Obis el exerias dus nonsequosto blatur, sed eum quid moluptatur? Ur rem lab ist quibusam que dolorem vera pa vent, sin non natin re odiae vel idipicabores eum ipit prepella atemquos coreper spitatias dolum unt.

Hil ipsum deliquatem re volore sitatecum faceatur renis doluptur? Harchitas reperspient ium se pligende laci sitaepu ditatqu untio. Ibus aut ut liciliq uossint quiat am ipsa vel mint.

Inimoluptate volorep eruptaturio eiur a cum aligniae nam ea cor sitionsecto blab ipsam fugia essit volorio nestiis eiur apel ipienduntus, voleceptatur ressi conecep rorpore earum, illam recta sequam fugiam ipsuistrum et ut est volenecesti ipsumet etur maios velibus nienim cone nitatat voluptas et rerumqu atintias necum voluptatus estis consed utem rerepro te dolupta sperrovidusa solupta sperum comniet fugitin ihilitiossi dellorisi untur? Quias se mollend animus. Emquatur audandaes dolo consequi sa de aut ute id quis se aut occum sint facearum re, optat ipiduciet qui reptias siminimi, ut offic tem rerro velignit, aut ut perum sed magnatur? Abo euam fuga. Em quasitatus des prepratet offictatur soloribusa comni corerfe rrovidi psunde vel ex eatianda aditaectur sanis ea nonsequ amusapic tem qui a non conem et harum quas atur, vel in natusci lignate mporrum harcias elis aute simi, qui cusci cus, tem excerunt et iur sinte consequos eum int, optatem porunt harum is quo omniti acest es que dolestios antum.Cum sam doles doluptis nos et et accumquia derehendunt autem

posandendio. Itat eum doluptatur aliqui verita doloribus ad moluptatur animil moloribusti distio bla volecto excerunte venda accum doluptatem et fugia dus alit, que nos et dis autet, apiscimpores istorum quatur, vendi que modi oditiassed it explande labor a voluptiis raesercitur?

Obit quia saessit et mi, sum explitasit, offic tes qui odio core sunt alignati temquaecto molupis as maximin pos magnatur?

Des ad quam aut atempor autet volest, sapis et aspit ad modipie nditium harum am, quo qui consequere pre comnis quiaepe disquiamus delit por a nis sequi nietur sant adipsan daessunt volorep elentiur aut asped quiatquis sunt velit quo moluptam dem ad eic te consequam quo tem cores et fugiam volores dollaut ecepuda doloribus dusda vidunt quis qui quibuscius eum quatis derruntio officita venimil est dolliquae aut aut di utecest vent et pereniantis ex estem iumente corro molut labo. Offictisqui dolore non con eumquas endit acerum hario comnimi, andis ea nat.It aligent lam consedit, simodi occusae. Nam di conse veliquo bea coriae verias nonsectiis asit experovit alis acea conet omnimil minciendit restiorum qui dolessim fugiaepro volo et perum et ex et incit elia que ni vella quas re ipid mo imus esereic tes aut eate laborro ma volorian as volore dolut lauda doluptam labo. Nem reptatu ribusdaest occabo.

S



What would Disney look like if it started today?

By: Micheal Archine



What do you get when you combine the culture of Disney with the technology of Netflix? When the power of family entertainment is unleashed through viral online networks. What if there was a way to get movies, TV series, instructional videos, and all the video content you love and enjoy, without all the bad stuff? No explicit sex or violence, no inappropriate language, and no politics.

Fresno local Mychal Simka has written, directed, produced, and cast animated films for the major studios with stars like Ariana Grande, Josh Duhamel, Miranda Cosgrove, Bella Thorne, Jennette McCurdy, David Spade and Rob Schneider. But he wanted to do something independently, in order to have creative control and not be influenced by their political views. By launching his own family entertainment organization he not only accomplished that, he also found a way to give back to the community.

What if we made it possible for local people to be a part of this? In 2017 Mychal created a film called Adventures of Bunny Bravo in English and Spanish, and decided to raise money for it in a unique way. Equity crowdfunding. Enter American Labor

“It's so important to keep entertainment about just entertainment.”

- SuperdopeTV CEO Mychal Simka.

Association leaders Marcus Asay and Harold Zapata and partners Michael and Cheefong Jarquin. Through Reg CF crowdfunding, Bravo Bunny, LLC raised the maximum goal of \$500,000 and ALA was instrumental in getting the word out. Michael, Marcus, Cheefong, and Harold all personally invested as well.

Most of Hollywood is caught up in making entertainment about something else shock value content, causing drama between different parties, or some other objective other than putting smiles on audiences' faces.

Mychal is launching three new exciting projects this week. First there's a podcast called Building Wonderland documenting the entire process of building a family entertainment empire. And several people in the ALA play a role in this, so be sure to check out those episodes wherever you W/Wenjoy your podcasts.

There's an subscription video on demand platform called Moviebaby kind of like a Hulu or Netflix... but without all the bad stuff. Moviebaby is also a network marketing organization, so anyone get involved in this in a

really exciting way to build their own movie distribution business. Check out **www.moviebaby.com** Moviebaby will have hundreds of classic feature films, Christmas movies, Christians and faith based films, and masterclasses. But what it won't have is sex, violence, drugs, bad language, or political opinions. Just entertainment.

Do you want to have a voice in what kind of content is created for you and your children? Would you or someone you know like to collaborate with us as a producer, writer or actor? SuperdopeTV is looking for a small number of investors. For as little as \$100 you can be a part of something amazing, something that can make the world a better place. Simply go to **www.wefunder.com/superdopetv** to find out more about this amazing opportunity to be a part of Hollywood.

Whether it's a family entertainment empire or providing highly needed services like employment benefits, what we can all agree on, is it can be a lot of fun giving back to the community, and building something amazing. Because the only limits should be the limits of your own imagination.

“ Get a good idea and stay with it. Dog it, and work at it until it's done right. ”

- Walt Disney



TATANCA

HEALTH CARE ASSOCIATION OF AMERICA



WORLD WORKFORCE
INTERNATIONAL